

# How to set document properties

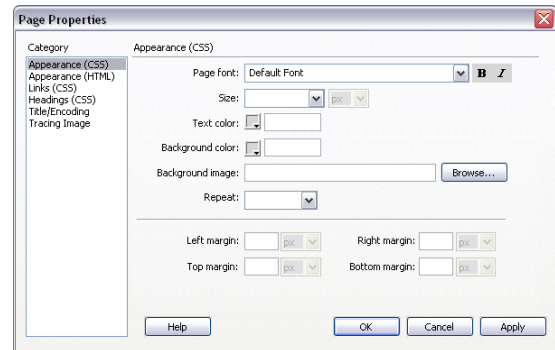
You can use the Page Properties dialog box to set page layout and formatting properties, such as a default font family, font size, font color, and background color.

## Set document properties

1. Open a document in Adobe Dreamweaver CS4.
2. Select Modify > Page Properties.  
The Page Properties dialog box opens (**Figure 1**).

### Change the default font for a page

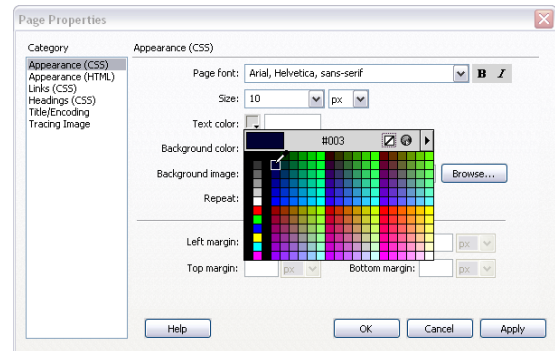
1. Select a font in the Page Font pop-up menu.
2. Select a font size in the Size pop-up menu.  
Any unformatted text will appear in the selected font and font size.



**Figure 1** Page Properties dialog box

### Change the default text color for a page

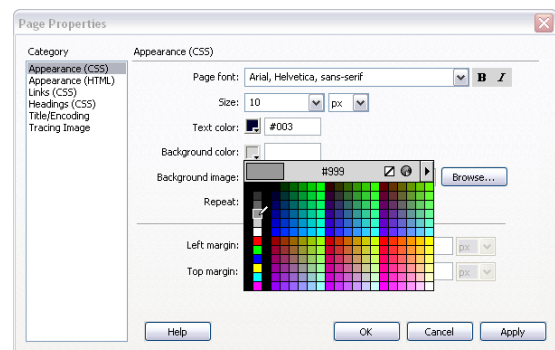
1. Click the Text Color box.
2. Select a color in the color picker (**Figure 2**).



**Figure 2** Text color picker

### Change the background color of a page

1. Click the Background Color box.
2. Select a color in the color picker (**Figure 3**).  
For information about other options in the Page Properties dialog box, click Help.
3. Click OK to close the Page Properties dialog box.



**Figure 3** Background color picker