

How to build a nameplate

To build a nameplate, you create a shape, add text, and then add Adobe Photoshop CS5 filters to the shape and the text.

Creating a nameplate

1. Start Adobe Photoshop CS5, create a new file, and specify canvas dimensions (at least 400 pixels wide and 200 pixels high).
2. Save the file.
3. Click the Rectangle tool in the Tools panel to create a background for your nameplate.

Shape tools are located between the Path selection tool and the 3D Rotate tool. By default, the Tools panel shows the Rectangle tool. (Figure 2).

4. In the color picker, choose a color for the rectangle.
5. Draw the rectangle by dragging the pointer across the canvas.
6. If the Layers panel is not already visible, choose Window > Layers.

Observe that the rectangle is on a separate layer with the default name of Shape 1 (Figure 2).

Note: Shape layers consist of two parts: a mask and a background color. The background color appears in the left of the layer, and the shape appears in the right. The link icon between the shape and fill indicates the two are linked.

7. To add your name to the nameplate, click the Create A New Layer button to add a new layer (Figure 2).
8. Select the Text tool in the Tools panel (Figure 1).
9. In the Text options bar (Figure 3), set a font family, font style, size, alignment, and color for the text.
10. Click on the canvas where you want to begin typing.
11. Type your name.
12. To change the location of the text, select the Move tool and drag the text.

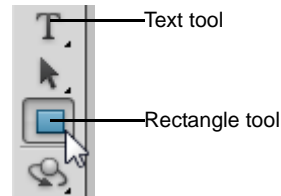


Figure 1 Text tool and Rectangle tool

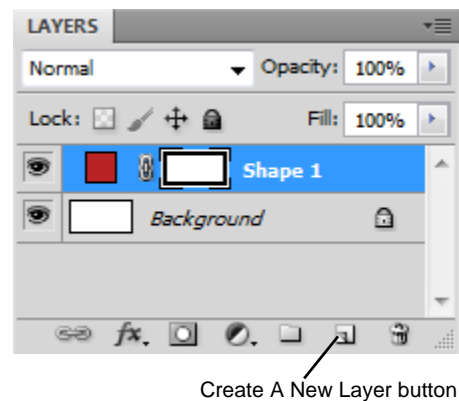


Figure 2 Shape layer in Layers panel



Figure 3 Text options barweb

13. In the Text options bar, select an anti-aliasing option for the text. (If text options are not visible, click your name layer in the Layers panel.)

- *None*: Applies no anti-aliasing.
- *Sharp*: Type appears at its sharpest. (This option is set by default.)
- *Crisp*: Type appears somewhat sharp.
- *Strong*: Type appears heavier.
- *Smooth*: Type appears smoother.

Anti-aliasing produces smooth-edged type by partially filling the edge pixels so the edges of the type blend into the background. For larger text to be viewed online, you may want to apply anti-aliasing. For smaller text, you may want to leave anti-aliasing turned off:

14. You can customize the look of the nameplate by applying filters to the text. Select the layer containing the text, and then choose Filter > Emboss.

A dialog box opens warning you that after you apply a filter to a text layer, the text will be *rasterized*, and is no longer editable.

15. Click Yes.

The Emboss dialog box opens (**Figure 4**).

Emboss gives the text a raised effect. Experiment with different filters and settings until you achieve the look you want.

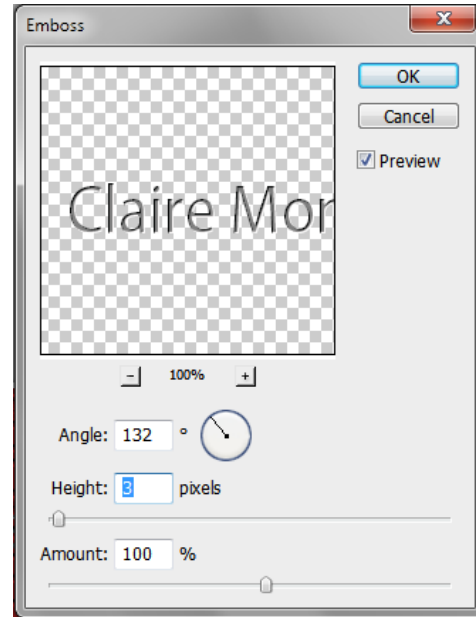


Figure 4 Emboss dialog box

16. Click OK to apply the filter.
17. You can also apply filters to the rectangle. Select the layer containing the rectangle and choose Filter > Texture > Mosaic Tiles.

The Filters dialog box opens (Figure 5).

Mosaic Tiles is just one of many filters with which you can achieve an artistic effect. Experiment with different filters and settings until you achieve the look you want.

Note: Not all filters will change the appearance of a solid shape.

Photoshop warns you it needs to rasterize the image before proceeding. This means the image will no longer be a vector mask. Rasterized images cannot be scaled as smoothly as vector masks.

18. Click OK to apply the filter.
19. In the Layers panel, double-click the layer containing the rectangle.

The Layer Styles dialog box opens (Figure 6).

20. Select a style, such as the Bevel and Emboss style, and apply options for the style.
21. Click OK to apply the layer style.
22. Save the completed nameplate (Figure 7).

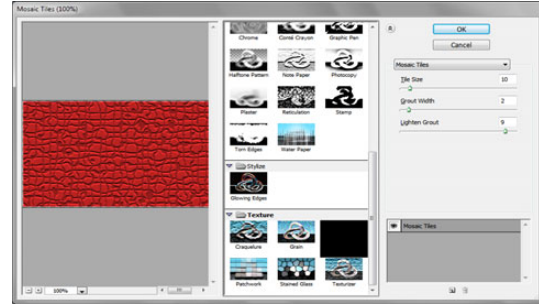


Figure 5 Filters dialog box

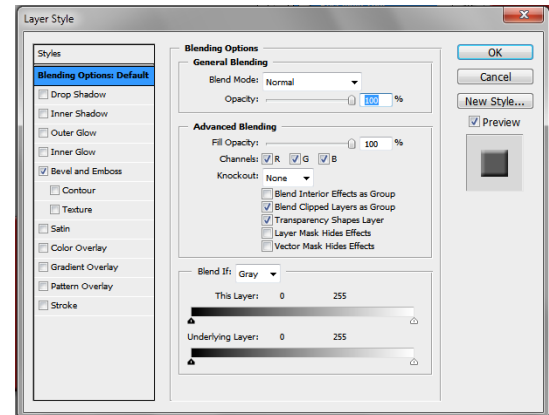


Figure 6 Layer styles dialog box



Figure 7 Completed nameplate

Saving the nameplate for use on a web page

In order to use the nameplate on a web page, you need to save the nameplate as an image file of an appropriate type.

To save the nameplate as a GIF or JPEG:

1. Choose File > Save For Web & Devices.

The Save For Web & Devices dialog box opens (Figure 8).

2. Specify an image type in the right pane.

Experiment with different settings. To view multiple options at once, click the 4-Up tab.

3. Click Save.

The Save Optimized As dialog box opens (Figure 9).

4. Browse to the location where you want to save the nameplate, and click Save.

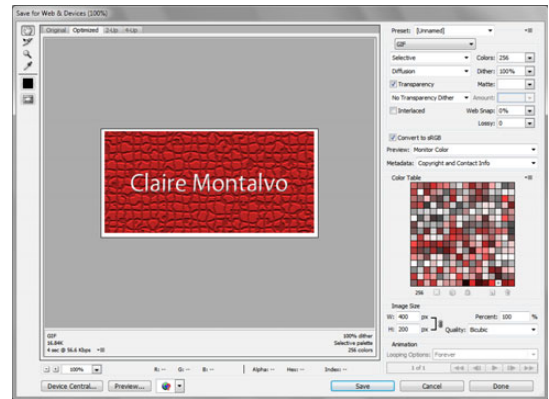


Figure 8 Save For Web & Devices dialog box

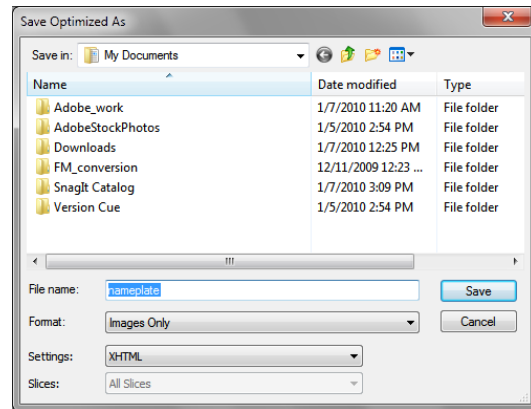


Figure 9 Save Optimized As dialog box