

How to use filters and layer styles

Adobe Photoshop CS5 filters and layer styles provide a range of options for changing an image's appearance.

These filters and layer styles can create added interest or help you achieve design goals. You should take care not to overuse filters, as too many filters can make an image look busy or unprofessional.

Applying a filter

You can use filters to apply special art effects that give your image the appearance of a sketch or pastel painting as well as apply distortions and lighting effects. Each filter has a range of settings. You can preview these before you apply them. Experiment with different settings to achieve your design goals.

To apply a Note Paper filter:

1. Select the layer that contains the object to which you want to apply the filter (**Figure 1**).
2. Choose Filter > Sketch > Note Paper.

Note Paper is just one of many filters with which you can achieve an artistic effect. The effect of Note Paper is to give your image the appearance of being drawn on rough paper.

Photoshop warns you it needs to rasterize the image before proceeding. (This means the image will no longer be a vector mask, which is how shapes are initially formatted in Photoshop.)

3. Click OK.

The Note Paper dialog box appears (**Figure 2**).

Note: The Artistic, Brush Strokes, Distort, Sketch, Stylize, and Texture filters all open in the same dialog box.

You can preview the effects of different filters by selecting them in the middle column.

4. In the right column, adjust the image balance, graininess, and relief of the notepaper. Experiment with different settings to achieve your desired effect.

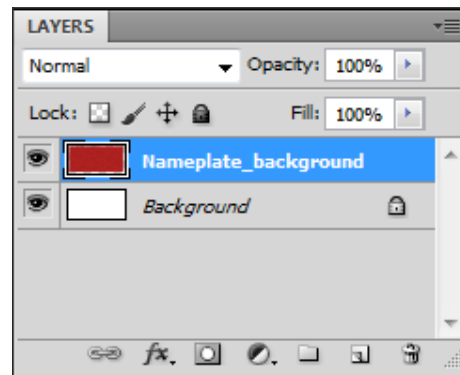


Figure 1 Layers panel

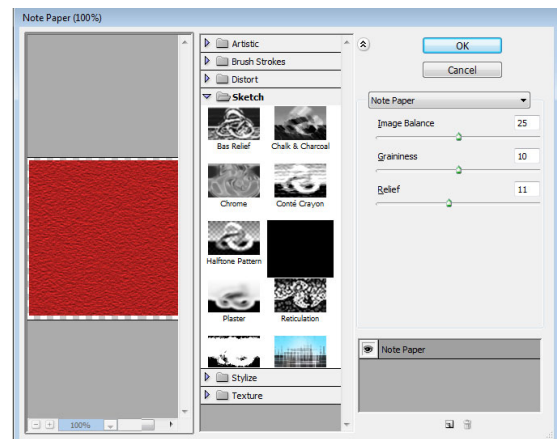


Figure 2 Note Paper dialog box

5. Click OK.

The filter is applied to the shape (**Figure 3**).

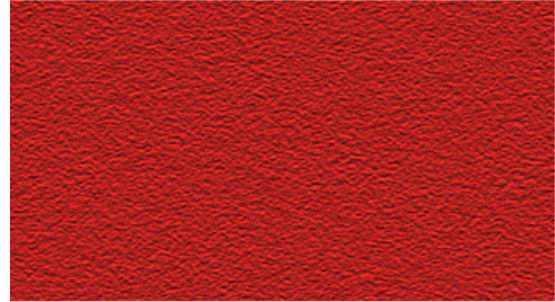


Figure 3 Note Paper filter applied

Using layer styles

You can also use layer styles to apply effects to a shape or text block. *Layer styles* are changes you apply to an entire layer. You can use layer styles to give your image or text a raised effect, a drop shadow, an outer glow, or a textured effect. You can also overlay a pattern with a layer style, such as a paper texture or a pattern that appears like rocks or bubbles.

To apply a Bevel layer style:

1. Double-click the layer to which you want to apply the layer style.

The Layer Style dialog box opens (**Figure 4**).
2. Select a style in the left column, such as Bevel And Emboss.
3. The Bevel And Emboss style gives your image or text the appearance of being raised or depressed.
4. In the center column, select the following settings:
 - Style: Inner Bevel
 - Technique: Smooth
 - Depth: 100%
 - Size: 10 px
 - Soften: 0

These settings give your image the appearance of being raised with a 10-pixel bevel.

5. Click OK.

The style is applied (**Figure 5**).

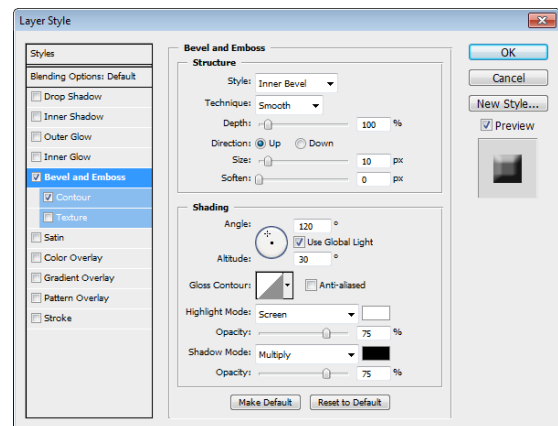


Figure 4 Layer Style dialog box



Figure 5 Bevel style applied

Applying pattern layer styles

Pattern styles let you apply a variety of textures to your image. You can reduce the opacity of these textures to reveal the background color of your image..

To apply a pattern layer style:

1. Double-click the layer to which you want to apply the layer style.

The Pattern pop-up panel opens (**Figure 6**).

2. Select Pattern Overlay in the left column.
3. In the center column, click the arrow to the right of the pattern icon.

The Pattern pop-up panel opens (**Figure 7**). By default, only two patterns appear.

4. Click the Pattern menu icon and choose a pattern library, such as Rock Patterns, from the menu.
5. Do one of the following:
 - Click OK to replace the current pattern library.
 - Click Append to add the patterns to the current selection of patterns.

The pattern library is displayed in the Pattern pop-up panel.

6. Click a pattern to select it.
7. Click in the Layer Style dialog box to close the Pattern pop-up panel.
8. Make sure the Preview option is selected. Adjust the following options:
 - Drag the Scale slider or enter a value to specify the size of the pattern.
 - Drag the Opacity slider or enter a value to specify the pattern's opacity.

Note: If opacity is set too high, you will be unable to see the image or text behind the pattern.

9. Click OK.

The style is applied (**Figure 8**).

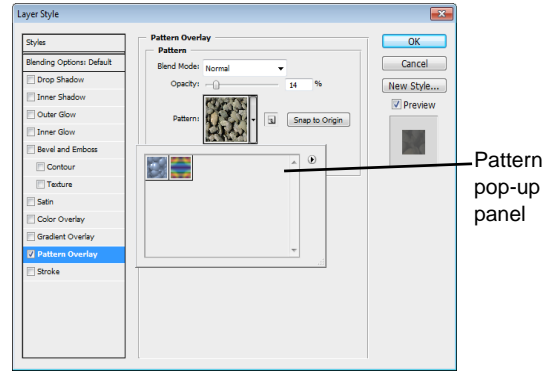


Figure 6 The Layer Style dialog box with Pattern Overlay selected

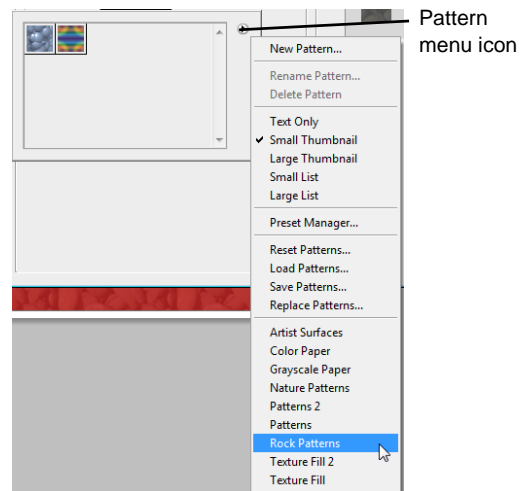


Figure 7 Pattern menu



Figure 8 Pattern overlay applied