

## Layout with Layers and CSS

Today we're going to make a Web site layout.

### Preparatory Step

1. Inside your folder create a new folder and name it **layout**.
2. Inside the layout folder create a new folder and name it **images**.
3. From the calendar on my website download **gradient1.png** and **gradient3.jpg** and save them to the My Documents\Your Folder\Layout Images folder.
4. Open Dreamweaver. Go to **Site>New Site** and create a new site named **layout yourname**.
5. Select the layout folder for the root and the image folder inside for the images.

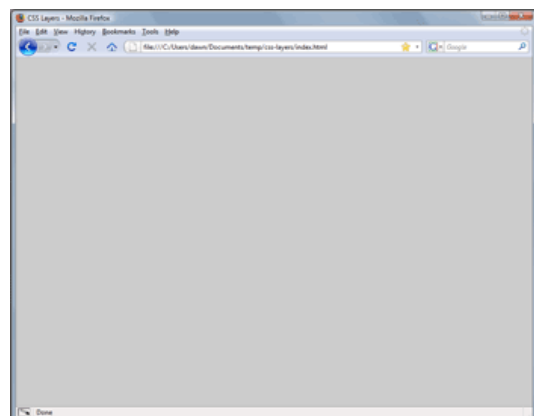
### Step One: Create the Body

First, we'll set up a gray background behind it all, and set the font style.

1. Create a new, blank HTML document in Dreamweaver.
2. Save the file as **index.html** inside your **layout**.
3. In the Document tool bar, change the Title to **CSS Layers**.
4. Show the CSS Styles panel and click on the *New CSS Rule* icon. Use these settings and click OK:
  - a. **Selector Type:** Tag
  - b. **Tag:** body
  - c. **Define in:** (New Style Sheet File)
5. Save the style sheet file as **main.css** in your CSS Layers folder.
6. In the *CSS Rule definition for body* box, use these settings and click OK:

Category	Setting	Value
Type	Font	Verdana, Arial, Helvetica, sans serif
	Size	10 pixels
	Color	#000000
Background	Background color:	#cccccc

7. Save both files (File > Save All), and with index.html active press **F12** to view the page in a browser. It should look like this:



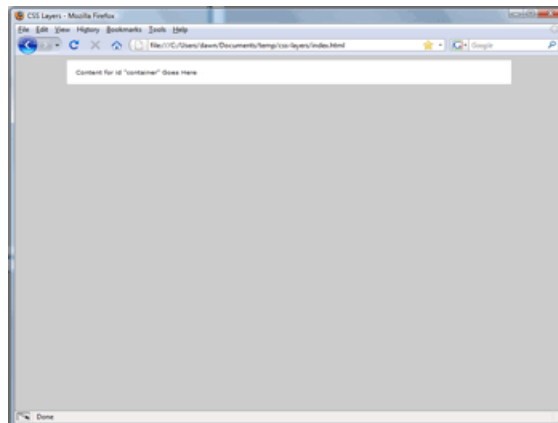
## Step Two: Create the Outer Container

Next, we'll create the large white rectangle that contains everything else. Using this layer outside of the layer in step three will create a nice, 15-pixel white border.

1. Click inside the page.
2. In the CSS Styles panel, click on the **New CSS Style** icon.
3. In the New CSS Rule box, use these setting and click OK:
  - a. **Selector Type:** ID (Applies to only one HTML element)
  - b. **Tag:** #container
  - c. **Define in:** main.css
4. In the *CSS Rule definition for #container* box, use these settings and click OK twice:

Category	Subcat.	Setting	Value
Background		Background color:	#ffffff
Box	Padding (UNCHECK same for all) Margin (UNCHECK same for all)	Width	720 pixels
		Top	0
		Right	Auto
		Bottom	0
		Left	Auto
Border (same for all)		Style	solid
		Width	15 pixels
		Color	#ffffff

5. Choose the following menu command: **Insert > Layout Objects > Div Tag**.
6. In the dialog box, select **ID:** container.
7. Save both files (File > Save All), and with index.html active press **F12** to view the page in a browser. It should look like this:



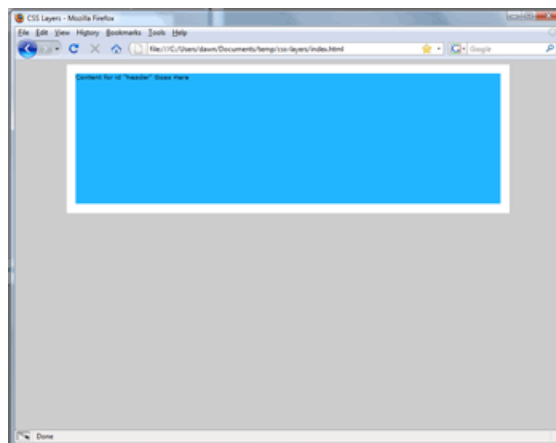
### Step Three: Create the Header

Here we'll create a header area in which a banner image could go later. It will have a baby blue background and have a 1-pixel white bottom border.

1. Click inside the *#container* layer. Delete the text that automatically filled the layer but leave your cursor inside the layer.
2. In the CSS Styles panel, click on the **New CSS Style** icon.
3. In the New CSS Rule box, use these setting and click OK:
  - a. **Selector Type:** ID (Applies to only one HTML element)
  - b. **Tag:** #header
  - c. **Define in:** main.css
4. In the *CSS Rule definition for #header* box, use these settings and click OK twice:

Category	Subcat.	Setting	Value
Background		Background color:	#22b5ff
Box		Width	720 pixels
		Height	220 pixels
Border (UNCHECK same for all in all 3 columns)	Bottom	Style	solid
		Width	1 pixel
		Color	#ffffff

5. Let's use a shortcut to insert the Div tag:
  - a. In the **Insert Panel**, change the dropdown to **Common**.
  - b. Click on the **Insert Div Tag** icon (the sixth one.)
6. In the dialog box, select **ID:** header.
7. Save both files (File > Save All), and with index.html active press **F12** to view the page in a browser. It should look like this:



## Step Four: Create the Navigation Area

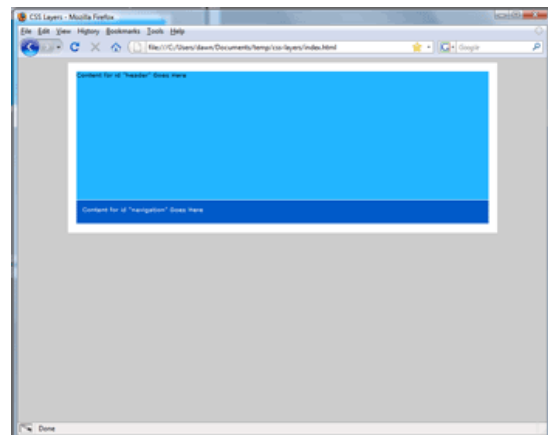
We need a rectangle below the banner for links. It will have a dark blue background and white text. It will also have a 1-pixel white bottom border, and 10 pixels of padding around its text. First, we need to tell Dreamweaver precisely where to put it by viewing the code.

1. Click on the **Code** button on the Document tool bar.
2. Find this bit of code and click just before it:  

```
</div>
</body>
</html>
```
3. Click on the **Design** button on the Document tool bar.
4. In the CSS Styles panel, click on the **New CSS Style** icon.
5. In the New CSS Rule box, use these setting and click OK:
  - a. **Selector Type:** ID (Applies to only one HTML element)
  - b. **Tag:** #navigation
  - c. **Define in:** main.css
6. In the *CSS Rule definition for #navigation* box, use these settings and click OK twice:

Category	Subcat.	Setting	Value
Type		Color	#ffffff
Background		Background color:	#005ac9
Box		Width	700 pixels
		Height	20 pixels
Padding (same for all)		Top	10
Border (UNCHECK same for all in all 3 columns)	Bottom	Style	solid
		Width	1 pixel
		Color	#ffffff

7. In the **Insert Panel**, click on the **Insert Div Tag** icon.
8. In the dialog box, select **ID:** navigation.
9. Save both files (File > Save All), and with index.html active press **F12** to view the page in a browser. It should look like this:





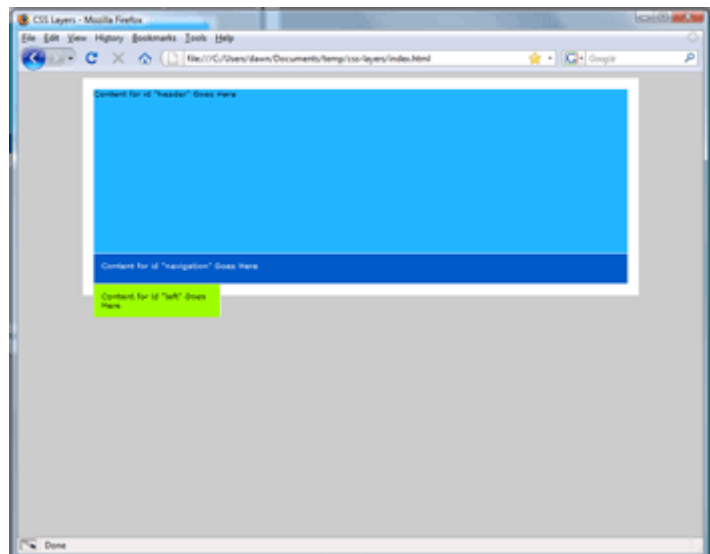
## Step Six: Create the Left-Hand Column

We'll create three columns for the content. The first column will be for sidebar information. It has a grass green background, 10 pixels of padding around its text, and a 1-pixel white border on its right side. We need to tell it to float left because we will be putting layers side-by-side here rather than one atop the other.

1. Click inside the local-container layer and delete the text there. Leave your cursor inside the layer.
2. In the CSS Styles panel, click on the **New CSS Style** icon.
3. In the New CSS Rule box, use these setting and click OK:
  - a. **Selector Type:** ID (Applies to only one HTML element)
  - b. **Tag:** #left
  - c. **Define in:** main.css
4. In the *CSS Rule definition for #left* box, use these settings and click OK twice:

Category	Subcat.	Setting	Value
Background		Background color	#9cff00
Box		Width	150 pixels
		Float	Left
	Padding (Same for all)	Top	10
Border (UNCHECK same for all for all 3 columns)	Right	Style	solid
		Width	1 pixel
		Color	#ffffff

5. In the **Insert Panel**, click on the **Insert Div Tag** icon.
6. In the dialog box, select **ID:** left.
7. Save both files (File > Save All), and with index.html active press **F12** to view the page in a browser. It should look like this:



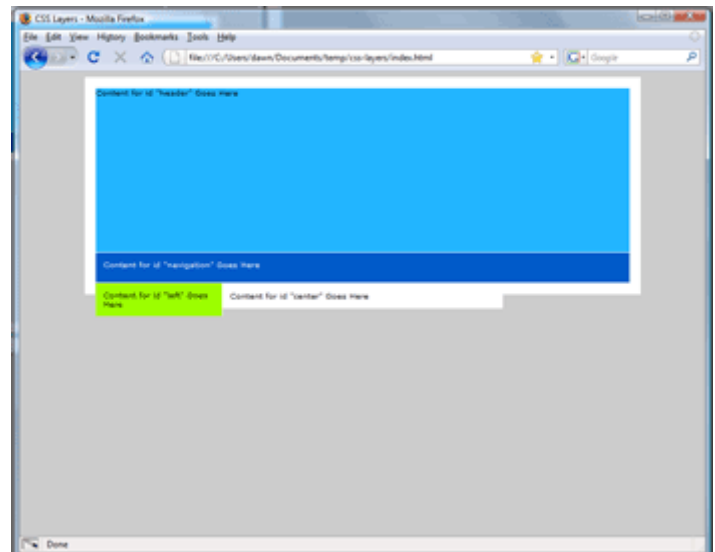
## Step Seven: Create the Center Column

This column will contain the main content. It has a white background, 10 pixels of text padding, and 1-pixel white borders on the top and bottom. It also needs to float left.

1. Click on the **Code** button on the Document tool bar.
2. Find this bit of code and click just after it:  
<div id="left">Content for id "left" Goes Here</div>
3. Click on the **Design** button on the Document tool bar.
4. In the CSS Styles panel, click on the **New CSS Style** icon.
5. In the New CSS Rule box, use these setting and click OK:
  - a. **Selector Type:** ID (Applies to only one HTML element)
  - b. **Tag:** #center
  - c. **Define in:** main.css
6. In the *CSS Rule definition for #center* box, use these settings and click OK twice:

Category	Subcat.	Setting	Value
Background		Background color:	#ffffff
Box		Width	358 pixels
		Float	Left
	Padding (same for all)	Top	10
Border (UNCHECK same for all in all 3 columns)	Top	Style	solid
		Width	1 pixel
		Color	#ffffff
	Bottom	Style	solid
		Width	1 pixel
		Color	#ffffff

7. In the **Insert Panel**, click on the **Insert Div Tag** icon.
8. In the dialog box, select **ID:** center.
9. Save both files (File > Save All), and with index.html active press **F12** to view the page in a browser. It should look like this:



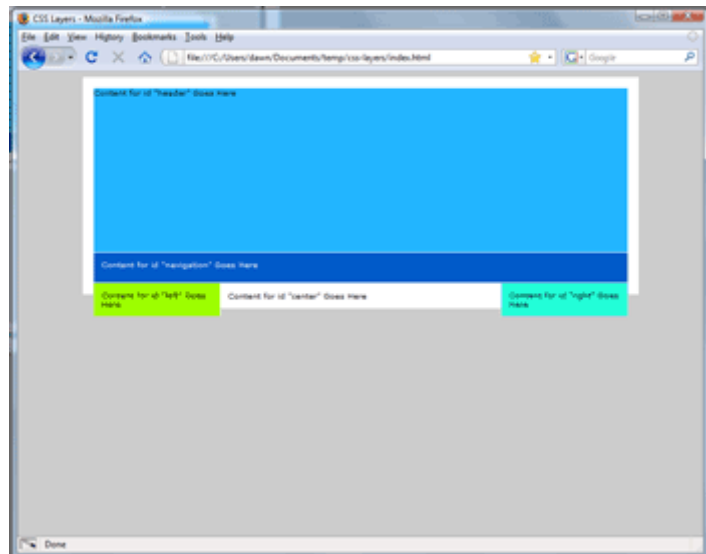
## Step Eight: Create the Right Column

This last column will be for secondary navigation.

1. Click on the **Code** button on the Document tool bar.
2. Find this bit of code and click just after it:  
`<div id="center">Content for id "center" Goes Here</div>`
3. Click on the **Design** button on the Document tool bar.
4. In the CSS Styles panel, click on the **New CSS Style** icon.
5. In the New CSS Rule box, use these setting and click OK:
  - a. **Selector Type:** ID (Applies to only one HTML element)
  - b. **Tag:** #right
  - c. **Define in:** main.css
6. In the *CSS Rule definition for #right* box, use these settings and click OK twice:

Category	Subcat.	Setting	Value
Background		Background color	#22ffd8
Box		Width	150 pixels
		Float	Left
	Padding (Same for all)	Top	10
		Left	
Border (UNCHECK same for all for all 3 columns)		Style	solid
		Width	1 pixel
		Color	#ffffff

7. In the **Insert Panel**, click on the **Insert Div Tag** icon.
8. In the dialog box, select **ID:** right.
9. Save both files (File > Save All), and with index.html active press **F12** to view the page in a browser. It should look like this.





## Step Nine: Create the Footer

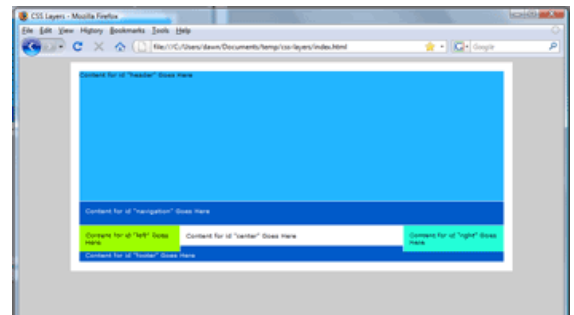
Finally, we'll put a nice bottom rectangle to allow for copyright information and other small notations and links. It has the same white text and dark blue background as the navigation bar, 10 pixels of text padding, and 1-pixel white borders on the top and bottom.

1. Click on the **Code** button on the Document tool bar.
2. Find this bit of code and click just before it:  

```
</div>
</body>
</html>
```
3. Click on the **Design** button on the Document tool bar.
4. In the CSS Styles panel, click on the **New CSS Style** icon.
5. In the New CSS Rule box, use these setting and click OK:
  - a. **Selector Type:** ID (Applies to only one HTML tag)
  - b. **Tag:** #footer
  - c. **Define in:** main.css
6. In the *CSS Rule definition for #footer* box, use these settings and click OK twice:

Category	Subcat.	Setting	Value
Type		Color	#ffffff
Background		Background color:	#005ac9
Box		Width	700 pixels
		Height	40 pixels
		Float	Left
	Padding (same for all)	Top	10
Border (UNCHECK same for all in all 3 columns)	Top	Style	solid
		Width	1 pixel
		Color	#ffffff
	Bottom	Style	solid
		Width	1 pixel
		Color	#ffffff

7. In the **Insert Panel**, click on the **Insert Div Tag** icon.
8. In the dialog box, select **ID: footer**.
9. Save both files (File > Save All), and with index.html active press **F12** to view the page in a browser. It should look like this:



## Step Ten: Cleaning up the Footer Issue

This site design is nice but it has a couple of layout flaws. Sometimes we need to do a dreaded "CSS Hack" to get a CSS site to behave the way we want.

Let's look at what's wrong:

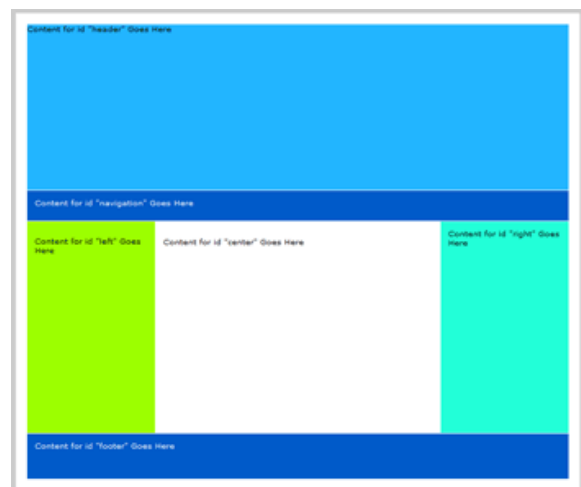
1. Click inside the center column and press Enter about ten times.
2. Click inside the left column and press Enter twice.
3. Notice that the green and teal columns do not expand along with the center column.
4. Select the menu command File > Preview in Browser > Firefox.

First, we need a horizontal rule to push that footer down, and we need it to be invisible.

1. In the CSS Styles panel, click on the New CSS Rule icon. Use these settings and click OK:
  - a. **Tag:** clear
  - b. **Selector Type:** Class
  - c. **Define in:** main.css
2. In the *CSS Rule definition for .clear* box, use these settings and click OK:

Category	Setting	Value
Block	Display	Block
Box	Clear	Left
Positioning	Visibility	Hidden

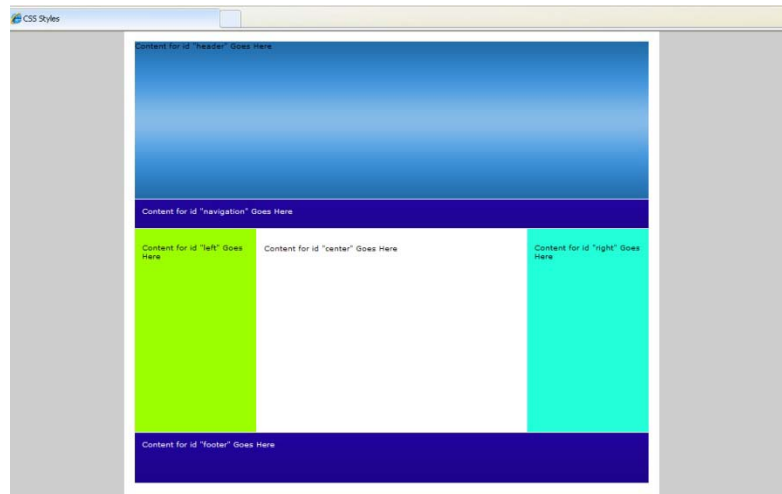
3. Save both files (File > Save All), and with index.html active press **F12** to view the page in a browser. It should look like this:
4. Click on the **Code** button on the Document tool bar.
5. Find this bit of code and click just after it:  
`<div id="footer">Content for id "footer" Goes Here</div>`
6. Click on the **Design** button on the Document tool bar.
7. On the **Insert Bar**, select **HTML** from the dropdown menu.
8. Click on the first icon for **Horizontal Rule**.
9. In the Property Inspector, set the **Class** to **clear**.
10. Press enter in the right and left columns so they and the center column are even.
11. Save both files (File > Save All), and with index.html active press **F12** to view the page in a browser. It should look like this:



## Step Eleven: Background Image

That does a nice job of pushing that footer down. We can also use a background image in the *#header*, *#navigation* and *#footer* layers.

1. In the CSS Styles panel, select the *#header* style and click the **Edit Style Sheet...** icon.
2. Go to the **Background** section and click on the **Browse** button next to Background Image.
3. Navigate to **gradient3.jpg** inside your images folder and click OK.
4. Save both files (File > Save All), and with index.html active press **F12** to view the page.
5. In the CSS Styles panel, select the *#navigation* style and click the **Edit Style Sheet...** icon.
6. Go to the **Background** section and click on the **Browse** button next to Background Image.
7. Navigate to **gradient1.png** inside your images folder and click OK.
8. Save both files (File > Save All), and with index.html active press **F12** to view the page in a browser.
9. In the CSS Styles panel, select the *#footer* style and click the **Edit Style Sheet...** icon.
10. Go to the **Background** section and click on the **Browse** button next to Background Image.
11. Navigate to **gradient1.png** inside your images folder and click OK.
12. Save both files (File > Save All), and with index.html active press **F12** to view the page in a browser.



13. Go back to Dreamweaver and look at all the HTML and CSS code you created in Dreamweaver.
  - a. Bring index.html up front by clicking on its tab. Click on the **Code** button on the Document tool bar. Find the various DIV tags which tell the layers where to go. **HTML is used for STRUCTURE.**
  - b. Bring main.css up front by clicking on its tab. Notice how the CSS tells the layers what size to be, what to look like and how to behave. **CSS is used for PRESENTATION.**